

# THE ICA PRESENTS QUARTET

A LIVE PERFORMANCE AT THE GREAT HALL IN ST. BARTHOLOMEW'S HOSPITAL, FARRINGDON, LONDON. FEBRUARY 15,16,17, AT 7.30 PM AND 18 AT 5PM.

## THE ICA PRESENTS QUARTET

ARTIST TALK ON THE 17TH AT 1.30 AT THE ICA.

### THE ARTISTS:

#### MARGIE MEDLIN

DIRECTOR, IS AN ARTIST, DESIGNER AND FILM-MAKER WORKING IN THE FIELDS OF DANCE AND THE MOVING IMAGE.

#### STEVIE WISHART

MUSICAL DIRECTOR AND COMPOSER, COMPOSES AND PERFORMS WITH VIOLIN, VOICE AND COMPUTER MUSIC.

#### HOLGER DEUTER

3D CHARACTER DESIGNER, SPECIALISING IN MOTION CAPTURE AND DIGITAL COMPOSITION.

#### NICK ROTHWELL

INTERFACE DESIGNER AND SYSTEMS DEVELOPMENT, IS A COMPUTER SCIENTIST WORKING IN THE FIELD OF ELECTRONIC MUSIC, RESPONSIVE ARTWORKS AND SYSTEMS PROGRAMMING.

#### GERALD THOMPSON

MOTION CONTROL CAMERA DESIGNER, WORKS IN THE FILM INDUSTRY SPECIALISING IN MOTION CONTROL AND DIGITAL EFFECTS.

A REAL-TIME PERFORMANCE THAT PLAYS ACROSS THE SENSES OF THE HUMAN BODY

### FOR TICKETS CONTACT:

ICA BOX OFFICE,  
THE MALL,  
LONDON SW1,  
020 7930 3647.  
WWW.ICA.ORG.UK

#### TODOR TODOROFF

SOUND AND GESTURE SYSTEMS ENGINEER, IS AN ELECTRICAL ENGINEER SPECIALISED IN SENSOR DESIGN, DIGITAL SIGNAL PROCESSING, SOUND DESIGN, AND INTERACTIVE SYSTEMS FOR PERFORMANCE.

#### LEA ANDERSON

CHOREOGRAPHER, HAS CHOREOGRAPHED OVER 100 ORIGINAL WORKS FOR HER COMPANIES AND IS FOUNDER AND ARTISTIC DIRECTOR OF THE CHOLMONDELEYS AND THE FEATHERSTONEHAUGHS.

#### RUSSELL MALIPHANT

CHOREOGRAPHER, IS THE ARTISTIC DIRECTOR OF RUSSELL MALIPHANT COMPANY.

#### LISA NELSON

CHOREOGRAPHER, WORKS INTERNATIONALLY AS DANCE-MAKER AND IMPROVISATIONAL PERFORMER.

#### CARLEE MELLOW

DANCER, WORKS WITH MANY AUSTRALIAN CHOREOGRAPHERS IN ADDITION TO CREATING HER OWN WORKS.



QUARTET IS FUNDED BY A SCIART PRODUCTION AWARD (2005-2006) FROM THE WELLCOME TRUST. IN COLLABORATION WITH THE PHYSIOLOGICAL LABORATORY, CAMBRIDGE UNIVERSITY, & CO-PRODUCED BY LIVE AND MEDIA ARTS DEPARTMENT AT THE INSTITUTE OF CONTEMPORARY ARTS, LONDON.

PROJECT MANAGEMENT BY ROWAN DRURY WITH ARTAKT, CENTRAL SAINT MARTINS COLLEGE OF ART AND DESIGN, UNIVERSITY OF THE ARTS, LONDON.

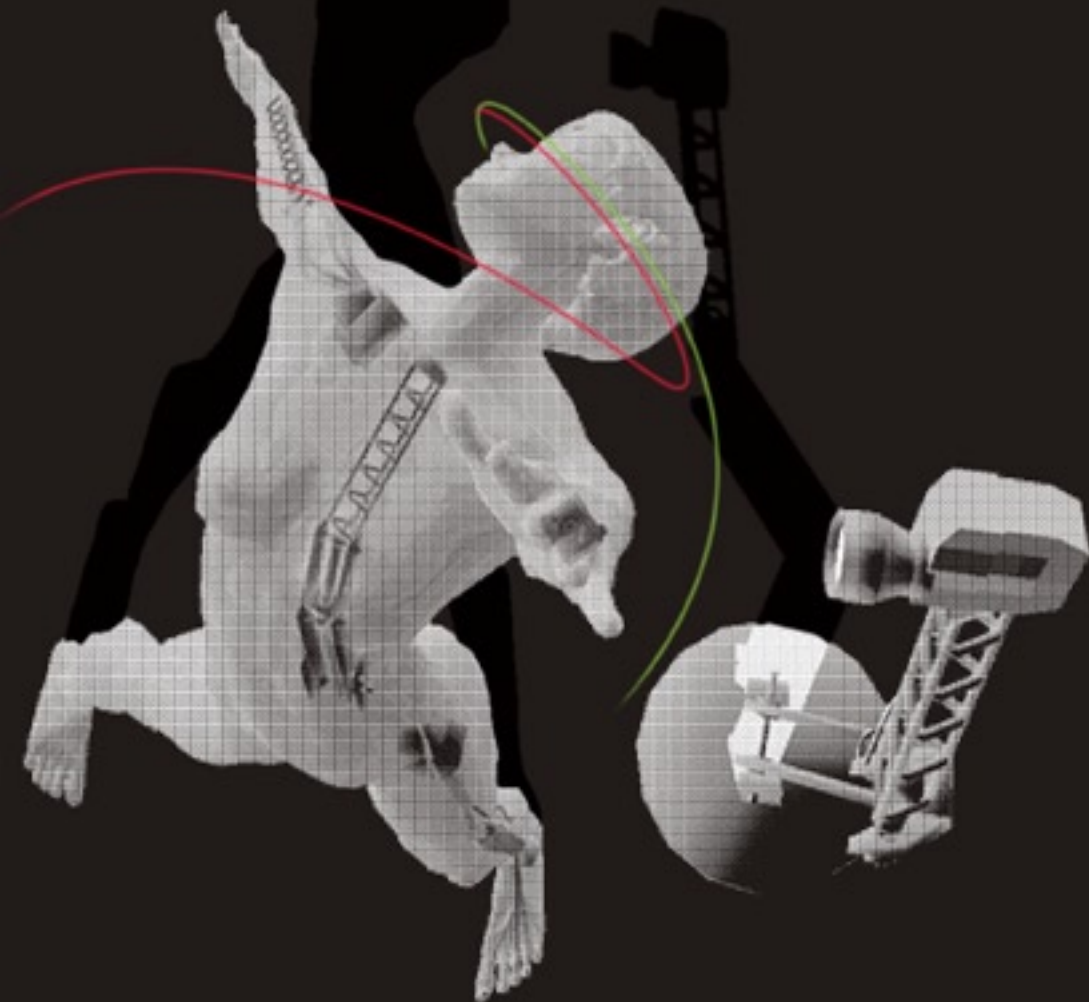
OTHER FUNDING PARTNERS INCLUDE THE ARTS COUNCIL OF ENGLAND, ARTS VICTORIA CULTURAL EXCHANGE PROGRAM.

THE NEW MEDIA BOARD AND INTERNATIONAL COMMUNITY PARTNERSHIPS AND MARKET DEVELOPMENT OF THE AUSTRALIA COUNCIL FOR THE ARTS.

PROJECT SUPPORT FROM: ZKM, ZENTRUM FUER KUNST UND MEDIEN TECHNOLOGIE. GERMANY. STEIM "STUDIO FOR ELECTRO INSTRUMENTAL MUSIC" HOLLAND.

ART ZOYD CENTRE TRANS-FRONTALIER DE PRODUCTION ET DE CREATION MUSICALES, VALENCIENNES, FRANCE, ARTEM (ART, RECHERCHE, TECHNOLOGIE ET MUSIQUE), BELGIUM. HARTWARE MEDIENKUNSTVEREIN, DORTMUND, GERMANY.

WWW.QUARTETPROJECT.NET



AN EPHEMERAL EXPERIMENT THAT INTERCONNECTS FOUR PLAYERS: MUSICIAN, DANCER, ROBOT AND VIRTUAL DANCER.

CHOREOGRAPHIES FROM SENSORY DATA ARE CREATED BY LEA ANDERSON, RUSSELL MALIPHANT AND LISA NELSON.

SCIENTIFIC RESEARCH IN THE FIELD OF PHYSIOLOGY THAT PRODUCES ELECTRIC ACOUSTIC COMPOSITIONS BY STEVIE WISHART.

